

# International Equity Alpha Pool

Class F CAD



AS AT MARCH 31, 2026

## FUND OVERVIEW

This fund invests primarily in equity and equity-related securities of non-North American companies.

## FUND DETAILS

Inception date	January 2019
Total net assets (\$CAD) As at 2026-03-31	\$196.6 million
NAVPS	\$14.1453
MER (%) As at 2025-12-31	1.28
Management fee (%)	Negotiable
Asset class	International Equity
Currency	CAD
Minimum investment	\$250,000 initial / \$25 additional

## Risk rating<sup>2</sup>



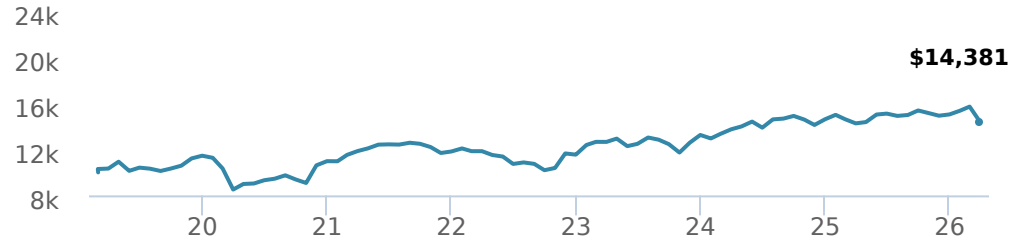
## FUND CODES

F	80583
A	ISC 19676 DSC SO* 19876 LL 19576 IDSC SO* 19776
E	ISC 16676 DSC SO* 16876 LL SO* 16576 IDSC SO* 16776
I	16476
OF	19376
W	ISC 9686 DSC SO* 9886 LL 1486 IDSC SO* 9786

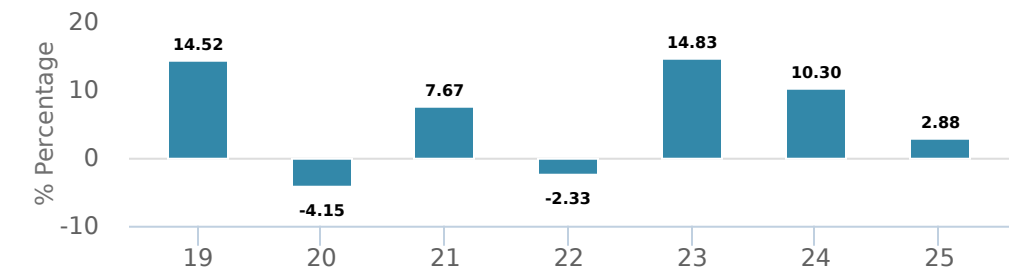
\*No new purchases directly into switch only funds.

## PERFORMANCE<sup>1</sup>

Growth of \$10,000 (since performance inception date)



## Calendar year performance



## Average annual compound returns

	YTD	1 Mo	3 Mo	6 Mo	1 Y	3 Y	5 Y	10 Y	Inception*
	-4.40%	-8.50%	-4.40%	-6.50%	0.80%	4.40%	3.90%	-	5.20%

\*Since performance inception date

## CI PREFERRED PRICING<sup>4</sup>

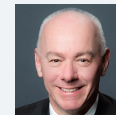
Investment amount	Combined fee reduction
\$500,000 and above	0.00%
\$1,000,000 and above	0.02%
\$2,500,000 and above	0.13%
\$5,000,000 and above	0.25%

## MANAGEMENT TEAM



**BLACK CREEK**  
INVESTMENT MANAGEMENT INC.

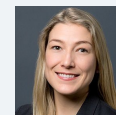
Black Creek Investment Management is led by award-winning money managers Bill Kanko and Richard Jenkins. Black Creek pursues an equity mandate with no restrictions on finding the best businesses in the world.



Richard Jenkins



Evelyn Huang



Melissa Casson

Note: This page is not complete without disclaimers on the next page.

# International Equity Alpha Pool

Class F CAD



AS AT MARCH 31, 2026

## PORTFOLIO ALLOCATIONS<sup>5</sup>

Asset allocation	(%)	Sector allocation	(%)	Geographic allocation	(%)
International Equity	96.85%	Technology	21.54%	Other	26.97%
Cash and Equivalents	3.16%	Consumer Goods	19.46%	United Kingdom	15.95%
Other	-0.01%	Healthcare	11.98%	France	15.05%
		Industrial Goods	11.59%	Cayman Islands	8.80%
		Consumer Services	10.44%	Mexico	7.16%
		Other	7.36%	Japan	6.49%
		Telecommunications	5.76%	Germany	6.26%
		Financial Services	5.15%	Sweden	4.84%
		Energy	3.56%	Canada	4.30%
		Cash and Cash Equivalent	3.16%	Netherlands	4.18%

## UNDERLYING FUND ALLOCATIONS

	Sector	(%)
1. International Equity Alpha Corporate Class (Ser I)	Mutual Fund	99.53%

## TOP HOLDINGS

	Sector	(%)
1. Capgemini SE	Information Technology	4.27%
2. STMicroelectronics NV	Computer Electronics	4.18%
3. Grifols SA - ADR Cl B	Drugs	4.16%
4. Tate & Lyle PLC	Food, Beverage and Tobacco	4.08%
5. Wienerberger AG	Construction Materials	4.06%
6. Fomento Economico Mexicano SAB de CV - ADR	Food, Beverage and Tobacco	4.04%
7. Accor SA	Leisure	3.97%
8. Nice Ltd - ADR	Information Technology	3.72%
9. Trip.com Group Ltd	Leisure	3.59%
10. Rakuten Group Inc	Information Technology	3.58%
11. Galp Energia SGPS SA	Integrated Production	3.56%
12. Hugo Boss AG	Consumer Non-durables	3.50%
13. Morgan Advanced Materials PLC	Manufacturing	3.38%
14. RS Group PLC	Computer Electronics	3.33%
15. Indus Towers Ltd	Diversified Telecommunications	3.30%

Note: This page is not complete without disclaimers on the next page.

**Over 35,000 financial advisors have chosen CI Investments as a partner. We believe that Canadians have the best opportunity for investment success by using the services of a professional financial advisor. [Learn more at ci.com](https://www.ci.com).**

<sup>1</sup> Commissions, trailing commissions, management fees and expenses all may be associated with mutual fund investments. Please read the prospectus before investing. The indicated rates of return are the historical annual compounded total returns (net of fees and expenses payable by the fund) including changes in security value and reinvestment of all dividends/distributions and do not take into account sales, redemption, distribution or optional charges or income taxes payable by any securityholder that would have reduced returns. Mutual funds are not guaranteed, their values change frequently, and past performance may not be repeated.

<sup>2</sup> The risk level of a fund has been determined in accordance with a standardized risk classification methodology in National Instrument 81-102, that is based on the fund's historical volatility as measured by the 10-year standard deviation of the fund's returns. Where a fund has offered securities to the public for less than 10 years, the standardized methodology requires that the standard deviation of a reference mutual fund or index that reasonably approximates the fund's standard deviation be used to determine the fund's risk rating. Please note that historical performance may not be indicative of future returns and a fund's historical volatility may not be indicative of future volatility.

<sup>4</sup> CI Preferred Pricing fee reductions apply to management and administration fees and start at \$100,000.

<sup>5</sup> Portfolio allocations will fluctuate over the life of the mutual fund as the portfolio holdings and market value of each security changes. The portfolio manager(s) may change the portfolio allocations in some or all of the sectors.

The contents are not to be used or construed as investment advice or as an endorsement or recommendation of any entity of security discussed.

©CI Investments and the CI Investments design are registered trademarks of CI Investments Inc. © CI Investments Inc. 2026. All rights reserved. "Trusted Partner in Wealth" is a trademark of CI Investments Inc.

Published April 2026