

Cash Management Pool

Class F CAD



AS AT MARCH 31, 2026

FUND OVERVIEW

FUND DETAILS

| | |
|--|---------------------------------|
| Inception date | May 2017 |
| Total net assets (\$CAD) As at 2026-03-31 | \$44.7 million |
| NAVPS | \$5.0000 |
| MER (%) As at 2025-12-31 | 0.15 |
| Management fee (%) | Negotiable |
| Asset class | Money Market |
| Currency | CAD |
| Minimum investment | \$250 initial / \$25 additional |
| Distribution frequency | Monthly |
| Last distribution | \$0.0003 |

Risk rating²



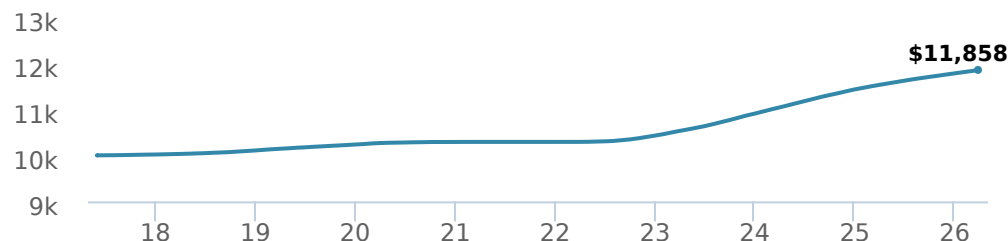
FUND CODES

| | |
|----|---|
| F | NL 80551 |
| A | ISC 19651 DSC SO* 19851 LL 19551 IDSC SO* 19751 |
| E | ISC 16651 DSC SO* 16851 LL SO* 16551 IDSC SO* 16751 |
| I | 16451 |
| OF | NL 19301 |
| W | ISC 9601 DSC SO* 9801 LL SO* 1351 NL 9695 IDSC SO* 9795 |

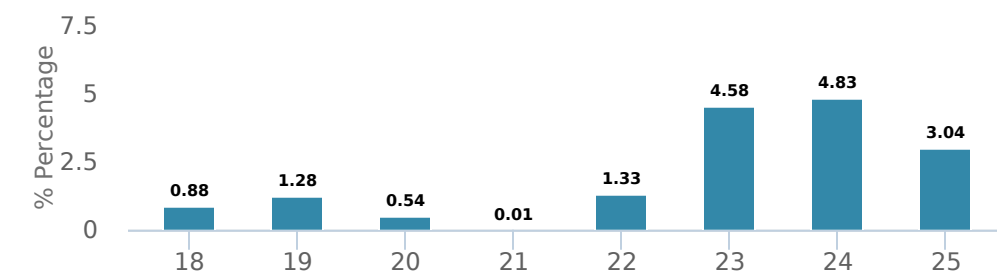
*No new purchases directly into switch only funds.

PERFORMANCE¹

Growth of \$10,000 (since performance inception date)



Calendar year performance



Average annual compound returns

| YTD | 1 Mo | 3 Mo | 6 Mo | 1 Y | 3 Y | 5 Y | 10 Y | Inception* |
|-------|-------|-------|-------|-------|-------|-------|------|------------|
| 0.60% | 0.20% | 0.60% | 1.30% | 2.80% | 4.00% | 2.90% | - | 1.90% |

*Since performance inception date

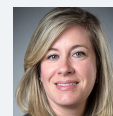
DISTRIBUTION HISTORY³

| Payable date | Total | Payable date | Total |
|--------------|--------|--------------|--------|
| 2026-03-31 | 0.0003 | 2026-03-24 | 0.0004 |
| 2026-03-30 | 0.0011 | 2026-03-23 | 0.0011 |
| 2026-03-27 | 0.0004 | 2026-03-20 | 0.0004 |
| 2026-03-26 | 0.0004 | | |
| 2026-03-25 | 0.0004 | | |

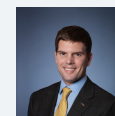
MANAGEMENT TEAM



CI Global Asset Management (CI GAM) is an integrated global investment asset manager with a strong lineup of relevant investment solutions that will help today's investors meet their financial goals. Our strength comes from our lineup of portfolio managers and the range of expertise they provide. Our teams employ some of the industry's brightest investment minds, whose knowledge and experience in research, security selection and risk management work on your behalf.



Leanne Ongaro



Grant Connor

Note: This page is not complete without disclaimers on the next page.

Cash Management Pool

Class F CAD



AS AT MARCH 31, 2026

PORTFOLIO ALLOCATIONS⁵

| Asset allocation | (%) | Sector allocation | (%) | Geographic allocation | (%) |
|---------------------------|---------------|--------------------------|---------------|------------------------------|---------------|
| Cash and Equivalents | 64.27% | Cash and Cash Equivalent | 64.27% | Canada | 99.95% |
| Canadian Corporate Bonds | 16.44% | Fixed Income | 35.68% | Other | 0.05% |
| Canadian Government Bonds | 11.81% | Other | 0.05% | | |
| Canadian Bonds - Other | 4.79% | | | | |
| Mortgages | 2.64% | | | | |
| Other | 0.05% | | | | |

TOP HOLDINGS

| | Sector | (%) |
|----------------------------------|--------------------------|---------------|
| 1. CI Money Market Fund Series I | Mutual Fund | 99.86% |
| 2. Cash | Cash and Cash Equivalent | 0.14% |

Note: This page is not complete without disclaimers on the next page.

Over 35,000 financial advisors have chosen CI Investments as a partner. We believe that Canadians have the best opportunity for investments success by using the services of a professional financial advisor. [Learn more at ci.com](https://www.ci.com).

¹ Commissions, trailing commissions, management fees and expenses all may be associated with mutual fund investments. Please read the prospectus before investing. The performance data provided assumes reinvestment of distributions only and does not take into account sales, redemption, distribution or optional charges or income taxes payable by any securityholder that would have reduced returns. Please note that mutual fund securities are not covered by the Canada Deposit Insurance Corporation or by any other government deposit insurer. There can be no assurances that the fund will be able to maintain its net asset value per security at a constant amount or that the full amount of your investment in the fund will be returned to you. Past performance may not be repeated.

The annualized historical yield shown is based on the seven-day period ended on < month end date and year >. It has been annualized in the case of effective yield by compounding the seven-day return (net of fees and expenses payable by the fund) and does not represent an actual one-year return.

² The risk level of a fund has been determined in accordance with a standardized risk classification methodology in National Instrument 81-102, that is based on the fund's historical volatility as measured by the 10-year standard deviation of the fund's returns. Where a fund has offered securities to the public for less than 10 years, the standardized methodology requires that the standard deviation of a reference mutual fund or index that reasonably approximates the fund's standard deviation be used to determine the fund's risk rating. Please note that historical performance may not be indicative of future returns and a fund's historical volatility may not be indicative of future volatility.

³ Please refer to the fund's simplified prospectus for distribution information.

⁵ Portfolio allocations will fluctuate over the life of the mutual fund as the portfolio holdings and market value of each security changes. The portfolio manager(s) may change the portfolio allocations in some or all of the sectors.

The contents are not to be used or construed as investment advice or as an endorsement or recommendation of any entity of security discussed.

©CI Investments and the CI Investments design are registered trademarks of CI Investments Inc. © CI Investments Inc. 2026. All rights reserved. "Trusted Partner in Wealth" is a trademark of CI Investments Inc.

Published April 2026